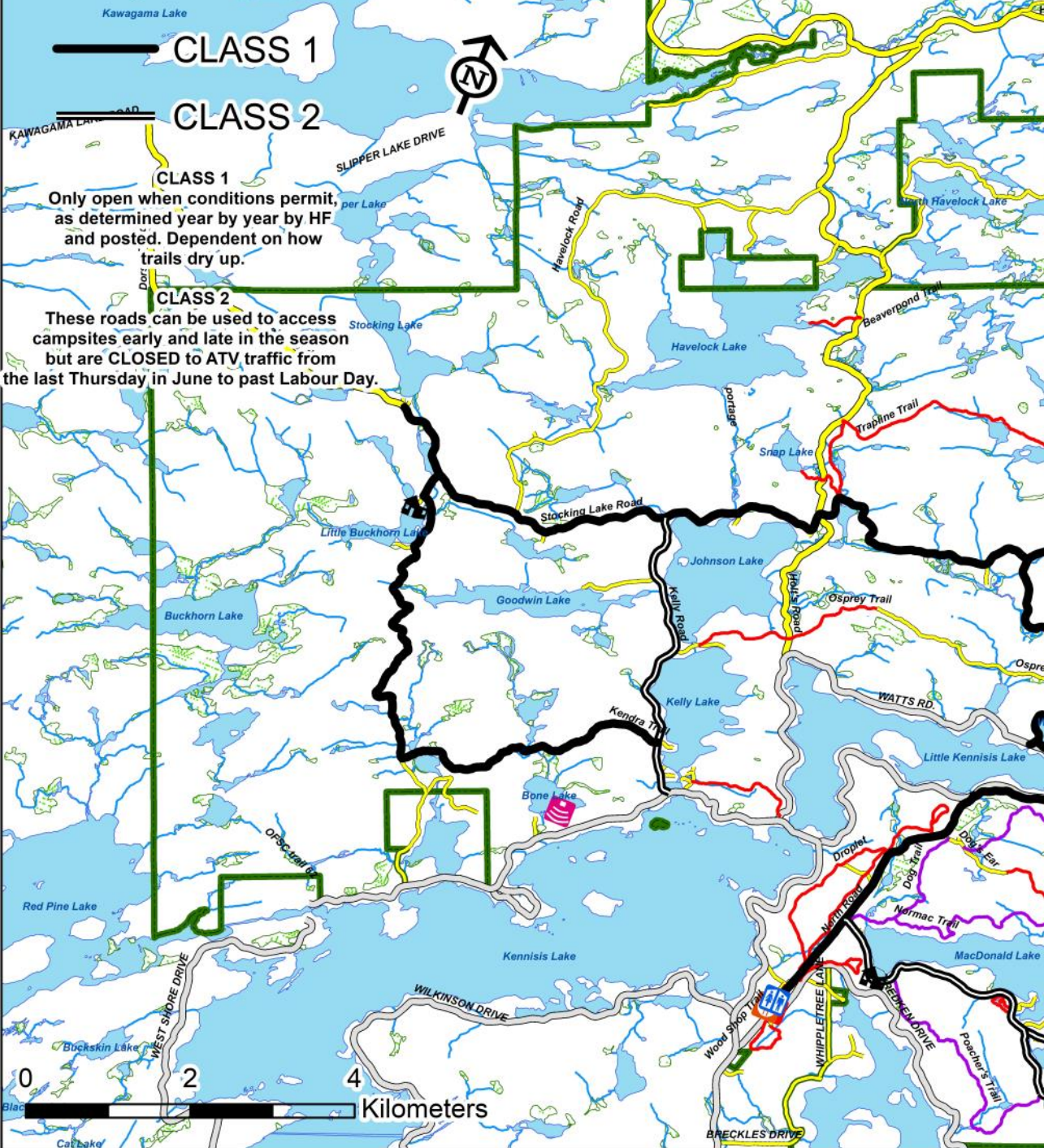




*Recreation*  
*ATV Access*

# HALIBURTON FOREST & WILD LIFE RESERVE, LTD. RECREATION ATV ACCESS



**CLASS 1**

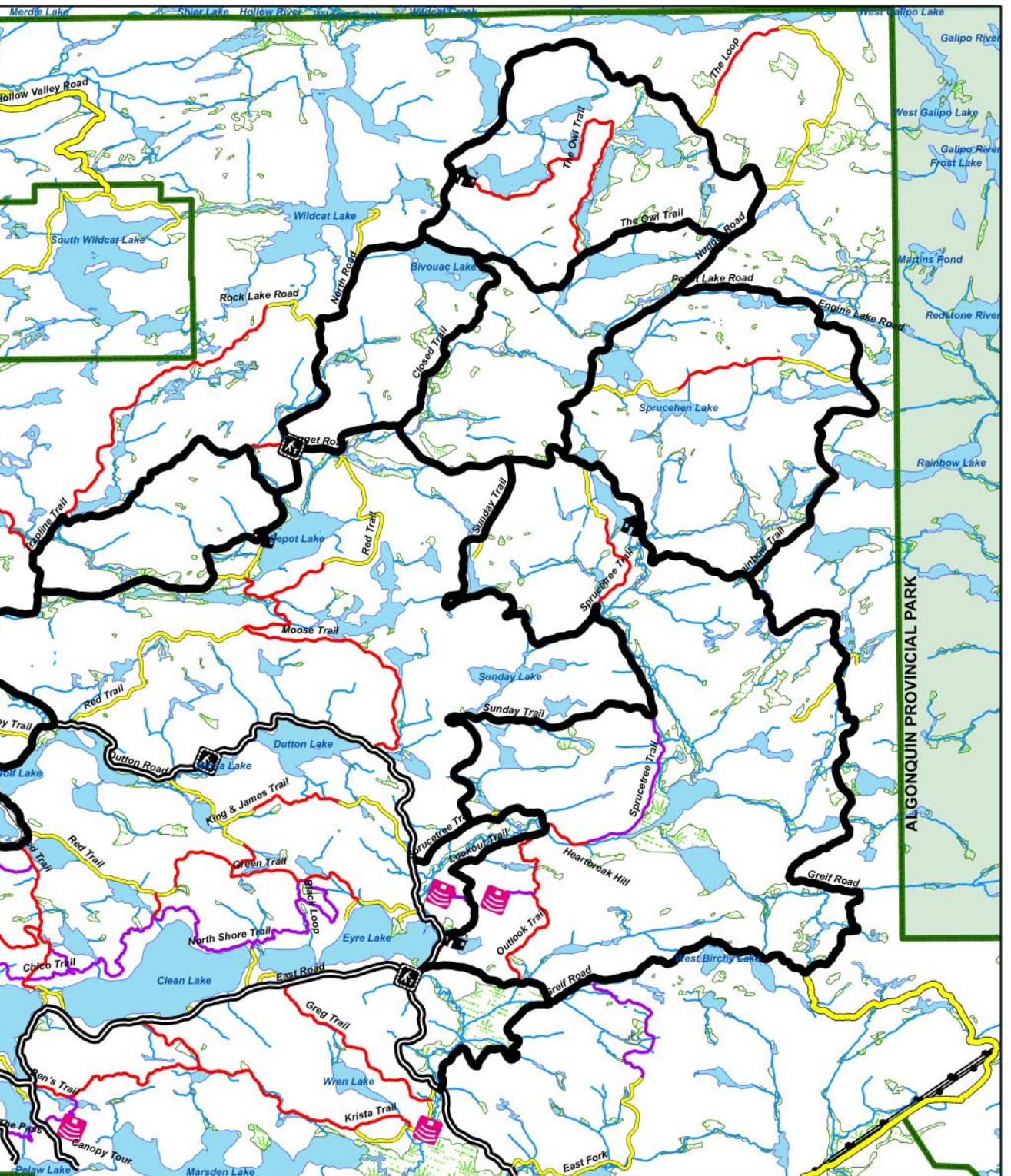
**CLASS 2**

**CLASS 1**  
Only open when conditions permit, as determined year by year by HF and posted. Dependent on how trails dry up.

**CLASS 2**  
These roads can be used to access campsites early and late in the season but are CLOSED to ATV traffic from the last Thursday in June to past Labour Day.







ALGONQUIN PROVINCIAL PARK

## ***Class 1—100 kms of trails***

- ◇ ***Closed Trail (3 km)***
- ◇ ***Greif Road (14.3 km)***
- ◇ ***Inside Loop (7.4 km)***
- ◇ ***Kendra Trail (7.8 km)***
- ◇ ***Kennisis Bypass (5.8 km)***
- ◇ ***Lookout Trail (not the Outlook) 4.7 km***
- ◇ ***North Road (13.5 km)***
- ◇ ***Nugget Road (8.9 km)***
- ◇ ***Owl Trail (4.6 km)***
- ◇ ***Rainbow Trail (11.3 km)***
- ◇ ***Stocking Lake Road (to L'Azure Lake) (9.5 km)***
- ◇ ***Sunday Trail (11.7 km)***
- ◇ ***Wolf Trail (3.8 km)***

## ***Class 2—35 kms of trails***

- ◇ ***Dutton Road (8.1 km)***
- ◇ ***East Road (13.5 km)***
- ◇ ***Kelly Road (3.8 km)***
- ◇ ***Pelaw Road (2.8 km)***